

# Yn y Lwp!

(In the loop - Ysgol Cwm Brombil's Weekly Bulletin)

In this edition:

- Sporting News
- PSG are back in Wales!
- Outdoor learning
- Senedd Update

## Spring Term / Tymor y Gwanwyn

Half Term : Monday 24<sup>th</sup> February - Friday 28<sup>th</sup> February /  
*Hanner Tymor*: Dydd Llun Chwefror 24 – Dydd Gwener Chwefror 28  
End / Diwedd: Friday 11<sup>th</sup> April 2025 / Dydd Gwener 11 Ebrill 2025

### Week Beginning - Monday 20<sup>th</sup> January 2024 Week 2

Monday		
Tuesday		
Wednesday		
Thursday		
Friday		

### Week Beginning - Monday 27<sup>th</sup> January 2024 Week 1

Monday		
Tuesday		Year 8 Parents Evening (3:25 - 18:30)
Wednesday		
Thursday		
Friday		

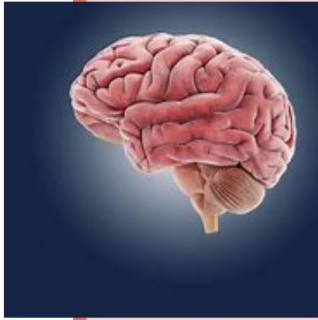
Our exciting program of Enrichment is out and available on our website:

[Ysgol Cwm Brombil Enrichment Programme](#)



# BENEFITS OF REGULAR PHYSICAL ACTIVITY

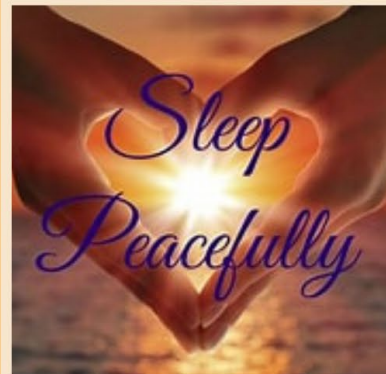
Aim for an average of at least 60 minutes of moderate or vigorous intensity physical activity a day across the week



## BOOSTS COGNITIVE FUNCTION

improves memory, focus and enhances productivity and creativity

## AIDS SLEEP QUALITY



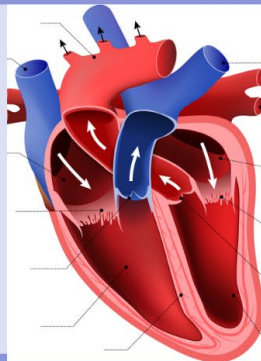
## IMPROVES MOOD

Reduces stress and anxiety promoting mental well being



## ENHANCES PHYSICAL HEALTH

Strengthens bones and muscles; protects against osteoporosis and fractures



## PROMOTES HEART HEALTH

Lowers the risk of heart disease; stroke and diabetes

## The Pantry

Our weekly food bank is open every Thursday from 3.15. This is available to anyone within our school community, no referral needed, please just drop in as and when needed.

We all need a little help sometimes. Entrance to the Food Bank – The Pantry is accessed via the pupil entrance in the senior phase school, inside the canteen area.

Refreshments will be provided for everyone waiting, we look forward to seeing you, please remember to bring your bags with you.



## Donations

We are always grateful for any donations that you can provide towards our food bank, we always need the below items. There is a drop off trolley in reception:

- Tinned Goods:
  - Meats – hotdogs, minced beef, pies, meatballs, curries etc.
  - Beans
  - Beans and Sausage
  - Spaghetti
  - Tinned Veg
    - Potatoes,
    - carrots,
    - peas,
    - sweetcorn
  - Tuna
  - Tinned fruits
- Cereal
- UHT Milk
- Pasta – including sauces
- Toiletries
  - Shampoo,
  - Shower gel,
  - Conditioner,
  - Toothpaste
  - Toilet rolls

\*Please NO sanitary products, we have lots in stock



THANK YOU FOR YOUR SUPPORT

## Attendance Information



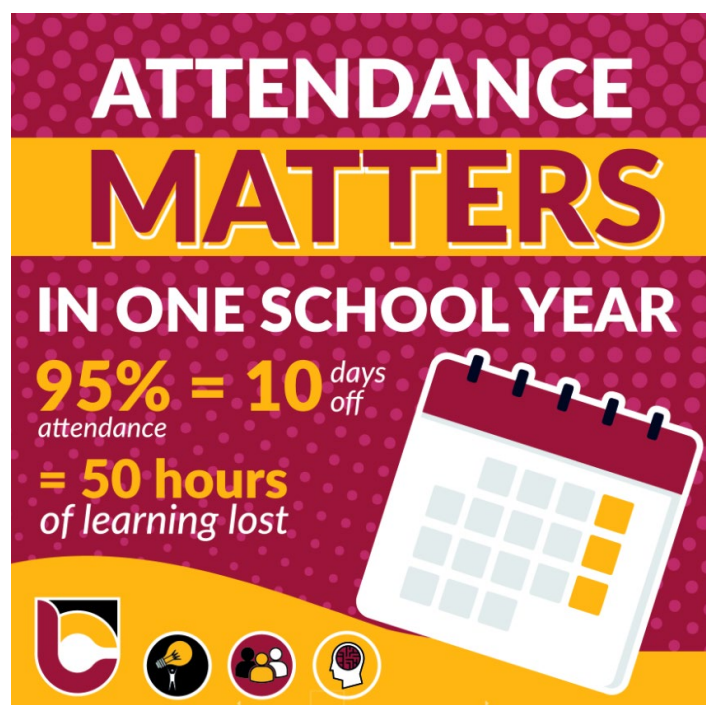
Our attendance target for all students is 100% and our **minimum expectation is 95%**. The infographic above shows the impact of days missed and minutes late can have on a child's learning.

For example:

- If a child is **late to school just 5 minutes** each day, throughout the year that equates to **3 days lost to learning (15 hours)**.
- Attendances of **97%** allows for one day of absence per half term and results in **30 hours lost to learning**

### **Important Reminders:**

1. Parents **MUST** contact school to report any absences on **01639 760110 before 8.30 am**.
2. Parents should contact the school **each day** that a pupil is not attending.
3. If the school are not notified, then **you will be contacted** by a member of the Attendance team to find out why your child is not in school.
4. If your child is not notified of the reason for the absence it will be recorded as **unauthorised absence**.
5. If there are three unauthorised absences in a row, the Safeguarding Lead and Education Welfare Officer will be made aware to ensure that your child is safe.
6. You will be required to produce medical evidence if you state that your child is ill for 3 or more consecutive days.
7. We will ask the school Healthcare Professional to contact you if there is an absence of more than 2 weeks.
8. Term time leave will only be granted by the headteacher on request.
9. Where possible, **all appointments should be made outside of the school day**.



# PSG Academy Wales



## Welcome to PSG Academy Wales!

Block 2 of the Player Development Programme at Ysgol Cwm Brombil in Port Talbot is now open for reservations!

The sessions will run every **Monday** from;

**15.00pm – 16.00pm**  
**(All Year Groups in YCB)**

**16.00pm - 17.00pm**  
**(Year 5/6 students only)**

**Player Development Session Dates:**

**January** - 20th, 27th

**February** - 3rd, 10th, 17th

**March** - 3rd, 10th, 17th, 24th, 31<sup>st</sup>

**April** - 7th

Book Now via:

<https://www.psgacademyuk.com/pdp-booking-form/>

**CERTIFICATES AND REPORTS**

Each player will receive a certificate of attendance and a report card which will be presented at the end of the year/season.

If you have any questions or queries, please do not hesitate to speak to us via email/phone call, we are more than happy to help.

We are excited to start the new season and look forward to welcoming you very soon.

Kind Regards  
Paris Saint-Germain Academy UK

**email:** [info@psgacademyuk.com](mailto:info@psgacademyuk.com)

**Tel:** 0161 235 5222

**web:** [www.psgacademyuk.com](http://www.psgacademyuk.com)

## School Uniform Expectations

All students are expected to wear school uniform throughout the school day.  
Below are uniform guidelines for both boys and girls, as well as PE Kit:

<b>All pupils Year 7 to 11</b>		
Blazer	Black school blazer	Available from Bergoni. Blazers must be brought to school and worn every day.
Shirt	White shirt with collar.	Can be purchased from any retailer.
Trousers	Plain black tailored uniform style trousers.	Jean style, corduroys, skinny or casual trousers are not permitted.
Skirt *	Plain black school uniform style skirt.	Skirts should be an appropriate length.
Tights	Plain black tights	Tights are to be worn with skirts and can be purchased from any retailer.
Shoes	Black shoes with black laces.	Available from any retailer. Black leather converse shoes are permitted. <b>NO TRAINERS</b>
Tie	School tie.	Available from Bergoni.
Jumper	Black with badge.	Available from Bergoni. Jumpers are optional.
Shorts	Black tailored shorts.	Only for the summer term. Not PE shorts.
Outdoor coat/Jacket	Coats should be waterproof and black in colour.	Available from any retailer.
Socks (only if not wearing tights)	Ankle height, plain black or white.	Available from any retailer.
<b>Please note hoodies are <u>not</u> allowed in school. Any pupil who refuses to remove them during the day will have them confiscated.</b>		
<b>Physical Education</b>		
Unisex T Shirt		Available exclusively from Bergoni
Rugby Jersey		Available exclusively from Bergoni
Shorts		Available exclusively from Bergoni
Socks		Available exclusively from Bergoni
Unisex ¼ zipped top		Optional item. Available exclusively from Bergoni
Plain black tracksuit bottoms		Optional available at any retail store
Skort or Legging (recommended to go a size bigger than your normal clothes size as they are smaller sizes.)		Available exclusively from Bergoni
<b>Please note, even on PE days, hoodies are not allowed in school. Pupils are expected to wear a long sleeve PE top when cold.</b>		

For further information regarding our uniform expectations please see our [school website](#):

# Sporting News & Success

## Cross Country

Congratulations to our Cross Country runners this week competing in the County Championship. A special mention to Sienna and Alfie for making the National Cross Country Round.



## Basketball

Interested in basketball if so why not give Port Talbot Spartans a go at our school on a Monday night for year 7 to year 11. A great opportunity to continue your learning from your PE lessons.

**SPARTANS**  
BASKETBALL

**Training Info**

**Mondays - Ysgol Cwm Brombil**  
7:00 - 8:15pm

**Wednesday - Cefn Saeson**  
Under 8s, 10s & 12s: 5:00 - 6:00pm  
Under 14s: 6:00 - 7:00pm  
Under 16s & 18s: 7:00 - 8:00pm

**£5 a session, newcomers and first timers are welcome!**

Times and venues are subject to change with games, please check Facebook for updates.

[facebook.com/groups/PortTalbotSpartans](https://www.facebook.com/groups/PortTalbotSpartans)



## Rugby

It's been a great few weeks for the year 11 rugby group. Some of the pupils solidifying their GCSE practical marks! Only one more match left of your school rugby career! Well done to the whole squad!



## Senedd News

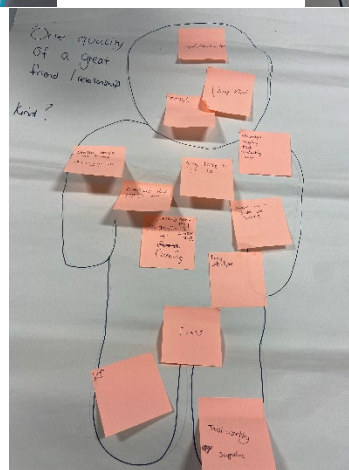
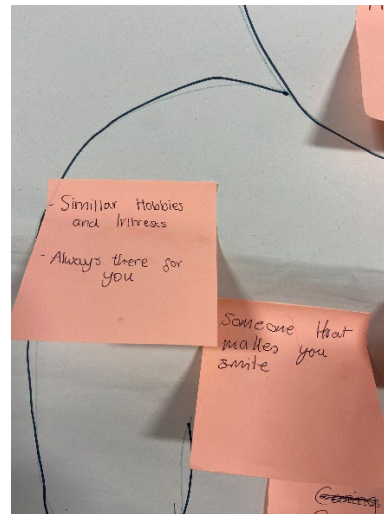
On Tuesday, Clare Pritchard, from the Children's Rights charity, visited our school to conduct an informative session on safe relationships. The session was held with members of the School Senedd, aiming to raise awareness and provide valuable guidance on the importance of healthy, respectful relationships.

During the session, Clare discussed key topics such as the characteristics of safe relationships, the importance of mutual respect, and how to recognize unhealthy behaviours. She also provided practical advice on how to handle difficult situations, emphasizing the importance of communication and seeking help when needed.

The Senedd were engaged and participated actively in discussions, asking questions and sharing their thoughts on what makes a relationship safe and respectful.

The session was both informative and empowering, giving the Senedd members a better understanding of how to build and maintain happy relationships. It was a valuable experience that contributed to fostering a positive and respectful school environment.

The Senedd expressed their gratitude to Clare Pritchard for her time and expertise, and they are eager to share the insights gained with the wider school community.



## Brombil Barracks Announcement

Brombil Barracks is a welcoming support group at Ysgol Cwm Brombil for service children. Welsh Government define service children as:



*A 'Service child' has parent(s) or person(s) exercising parental responsibility who is/are Service personnel serving:*

- *In HM Regular or Reserve Armed Forces – Royal Navy and Royal Marines; British Army and Royal Air Force,*
- *Or- Is an Armed Forces Veteran who has been in Service within the past two years,*
- *Or - One of their parents died whilst serving in the Armed Forces and the learner has received a pension under the Armed Forces Compensation Scheme or the War Pensions Scheme.*

If your child falls into this category and we are not aware please contact the school to inform us so we can provide appropriate provisions. Please find useful links and tools below to support your service children at home. We would encourage you to share any future deployments with us and if deployed parents require communication from staff regarding pupil progress please contact us and we can accommodate this. Mrs Stanton (B12) and Mrs Sims (B14) are available for pupils drop ins at any time.

### **SSCE Monthly Bulletin:**

[SSCE Cymru :: Monthly school bulletin](#)

### **SSCE Family Guide:**

[SSCE Cymru Service family guide](#)

### **Little Troopers at home:**

[Little Troopers at Home - Little Troopers](#)

### **Further support for service children with ALN:**

Education Advisory Team (EAT)

### **X accounts:**

@SSCECymru

@LittleTroopers

### **Future Military Opportunities:**

[Motivational Preparation College for Training \(MPCT\)](#)

[The Reserve Forces' and Cadets' Association \(RFCA\) for Wales](#)

**SSCE**  
**CYMRU**

# Outdoor Learning

An Exciting Week Ahead in Outdoor Learning!

Our Year 9 and 10 pupils are diving into their new units, focusing on sustainability and how to make a real impact. This week, they'll be planting hundreds of trees with the amazing support from idigtrees—helping to create a greener future.

After-School Club is back and now on Wednesdays, 2:45-4 PM. This week, we'll be building bug hotels to support local wildlife—don't miss it! Plus, we're thrilled to announce the launch of our new Outdoor Learning Committee. Applications are open to all Year 7-11 pupils. Be a voice for your school's outdoor spaces and help us grow together!

Breakfast Club returns on Friday! Support our garden funding while enjoying a delicious bacon roll and a hot drink for just £2—a perfect way to start your morning.

Let's make this week unforgettable! Get involved, get outdoors, and let's grow together. We can't wait to see you there!





# OUTDOOR LEARNING COMMITTEE

## Take learning outside

Our new Outdoor Learning Committee is looking for enthusiastic members! This group will focus on enhancing our outdoor spaces, creating exciting learning opportunities, and fostering a love for nature within the school.....

Be a part of shaping our outdoor learning projects, including the tipi garden, allotment, and front of school, into inspiring places for learning. Share your ideas and make a difference. Help plan activities, events, and projects that benefit the school and local community.

Gain valuable teamwork and leadership skills.

We're so excited to get started and would love for you to join us! Everyone is welcome, whether you're an Outdoor Learning pupil, or have never step foot in our gardens, together, we can make Outdoor Learning an amazing experience for the whole school.

For more information or pick up an application form, contact:

Angie Thompson

Email:

[thompsona533@hwbeymru.net](mailto:thompsona533@hwbeymru.net)

Can be found in the Tipi garden!

## Term dates for 2024-25

Autumn Term, half term 1 2024-25	
Tuesday 3 <sup>rd</sup> September 2024	Year 7 & 11 attend school
Wednesday 4 <sup>th</sup> September 2024	All pupils attend school
Friday 25 <sup>th</sup> October 2024	Last Day of half term 1
Half Term holiday - Monday 28 <sup>th</sup> October 2024 – Friday 1 <sup>st</sup> November 2024	
Autumn Term, half term 2 2024-25	
Monday 6 <sup>th</sup> November 2024	Term starts
Friday 29 <sup>th</sup> November 2024	Staff INSET (Training) Day
Monday 2 <sup>nd</sup> December 2024	Staff INSET (Training) Day
Friday 20 <sup>th</sup> December 2024	Last Day of half term 2
Christmas Holiday – Monday 23 <sup>rd</sup> December 2024 – Friday 3 <sup>rd</sup> January 2025	
Spring Term, half term 3 2024-25	
Monday 6 <sup>th</sup> January 2025	Half term 3 Starts for all pupils
Monday 17 <sup>th</sup> February	Staff INSET (Training) Day
Friday 21 <sup>st</sup> February 2025	Last Day of half term 3
Half Term holiday - Monday 24 <sup>th</sup> February 2025 – Friday 28 <sup>th</sup> February 2025	
Spring Term, half term 4 2024-25	
Monday 3 <sup>rd</sup> March 2025	Term 4 Starts
Friday 11 <sup>th</sup> April 2025	Last Day of half term 4 for pupils
Easter holiday - Monday 14 <sup>th</sup> April 2025 - Friday 25 <sup>th</sup> April 2025	
Summer Term, half term 5 2024-25	
Monday 28 <sup>th</sup> April 2025	Term 5 Starts
Monday 5 <sup>th</sup> May 2025	May Day Bank Holiday
Thursday 22 <sup>nd</sup> May 2025	Last Day of half term 5
Friday 23 <sup>rd</sup> May 2025	Staff INSET (Training) Day
Half Term - Monday 26 <sup>th</sup> May 2025 - Friday 31 <sup>st</sup> May 2025	
Summer Term Half term 6 2024-25	
Monday 2 <sup>nd</sup> June 2025	Half term 6 Starts
Friday 18 <sup>th</sup> July 2025	Last Day of half term 6 & End of school Year

